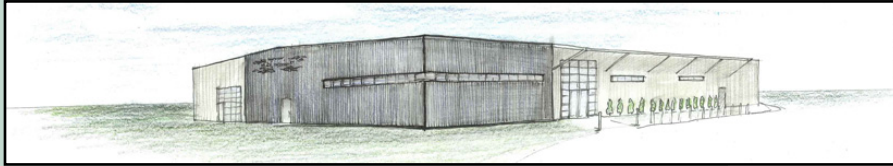


Weken Toys and Electronics - Ohsweken, ON



Two Row Architect worked in conjunction with design-builders Vicano Construction Limited to develop this exciting new retail facility in the heart of the Six Nations Community.

Through thoughtful planning, the 30,000 sq.ft. building utilizes pre-engineered steel construction and serves as a catalyst for a future super-centre on the site's overall master plan. Future expansion opportunities were also considered in the facility's design.

From concept to completion - the schedule including full earthworks, independent site servicing (well & septic) including parking lot construction, only took a total of five months.

Client: Weken Toys & Electronics
 Six Nations of the Grand River
 Size: 30,000 ft²
 Architect: Two Row Architect
 Opened: 2008

