

Moravian Health Centre



Exterior Elevation

The existing health centre was constructed, like many others, during the 1970s. This facility was inadequate to serve the needs of the community and a new building was proposed.

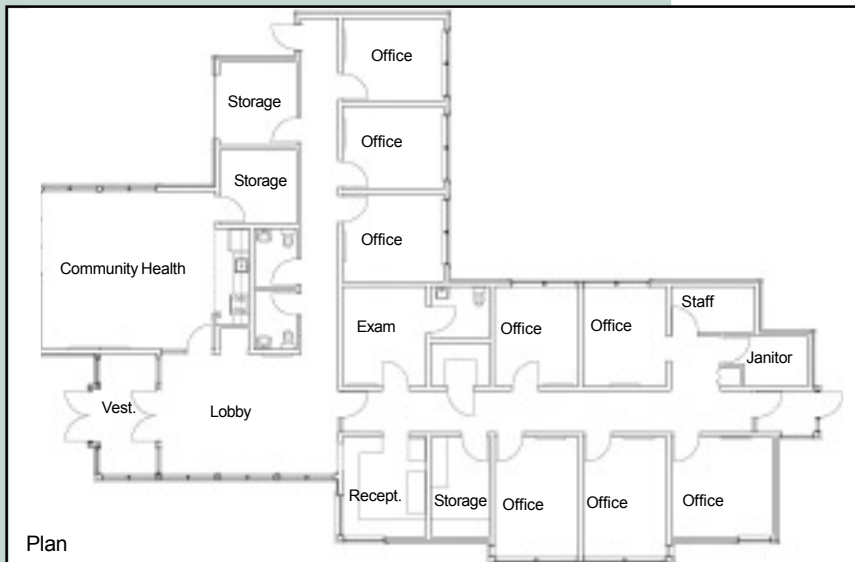
The building's roof line remains low, however entrances are marked with shed roofs to direct rain water away. Their position, and that of other openings, have been located for protection from prevailing winds and weather.



View of Lobby

Interior finishes used are also durable and easy to maintain for a health services facility.

The floor layout is efficient in its use of space by maintaining straight corridor space. Public spaces are easily accessed and identified by their adjacent locations to the main entrance. Interior finishes used are also durable and easy to maintain for a health services facility.



Plan

Client: Moravian of the Thames First Nation
Size: 3,665 ft² (340.5 m²)
Cost: \$325,000 construction cost
Architect: Two Row Architect
Officially Opened: Sept. 1996
Builder: Bronnenco Construction Ltd.