

Kettle and Stony Point Hillside Elementary School



A building form was established that repeats the roof planes, low building height and exterior finishes found in surrounding buildings. In doing so, the building became much more residential in character. Drop-off areas are protected from prevailing winds and roof ridges/valleys were designed to direct rainfall away from entrances. The interior layout was based on a zoned planning approach.



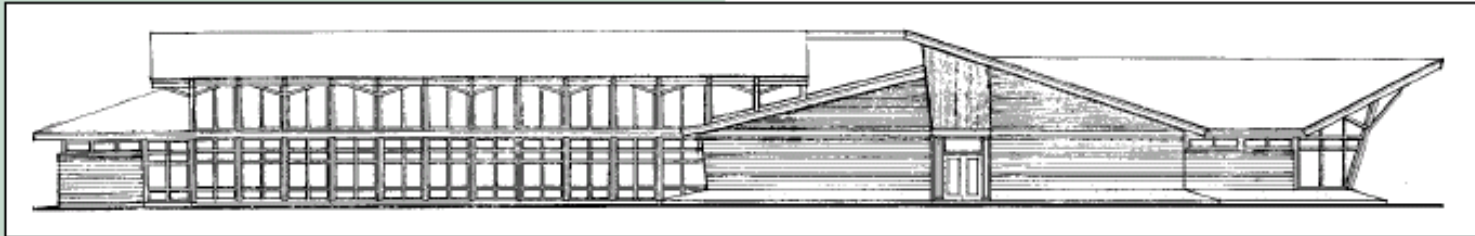
The design provided for each of the various components (school, public library, recreation centre and banquet hall) to have its own signage and be visible from the street. In this manner, visitors can orient themselves prior to entering what has become the cultural, social, recreational and educational heart of the community.



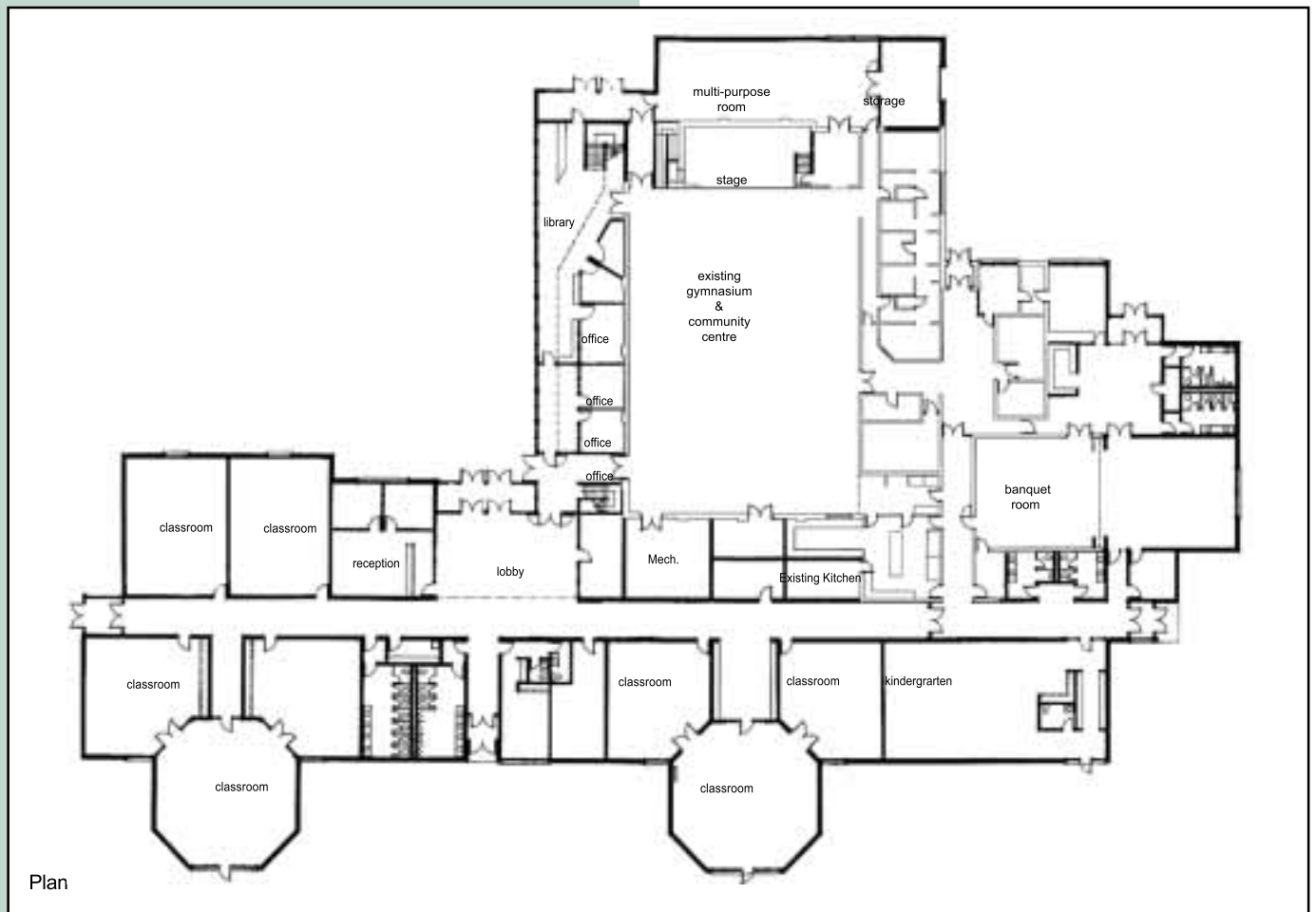
Project management was administered and completed by the First Nation. The project committee selected community members to manage and construct the project. The band was able to train and hire local labour, by using band training dollars. In doing so, the project's labour cost component was reduced and local money remained within the local economy.

Kettle and Stony Point Hillside Elementary School

Client: Kettle and Stony Point F.N.
Size: 15,381 ft² (1,429 m²)
Cost: \$1.9 M construction value
Architect: Two Row Architect
Status: Opened November 1995



Exterior elevation



Plan