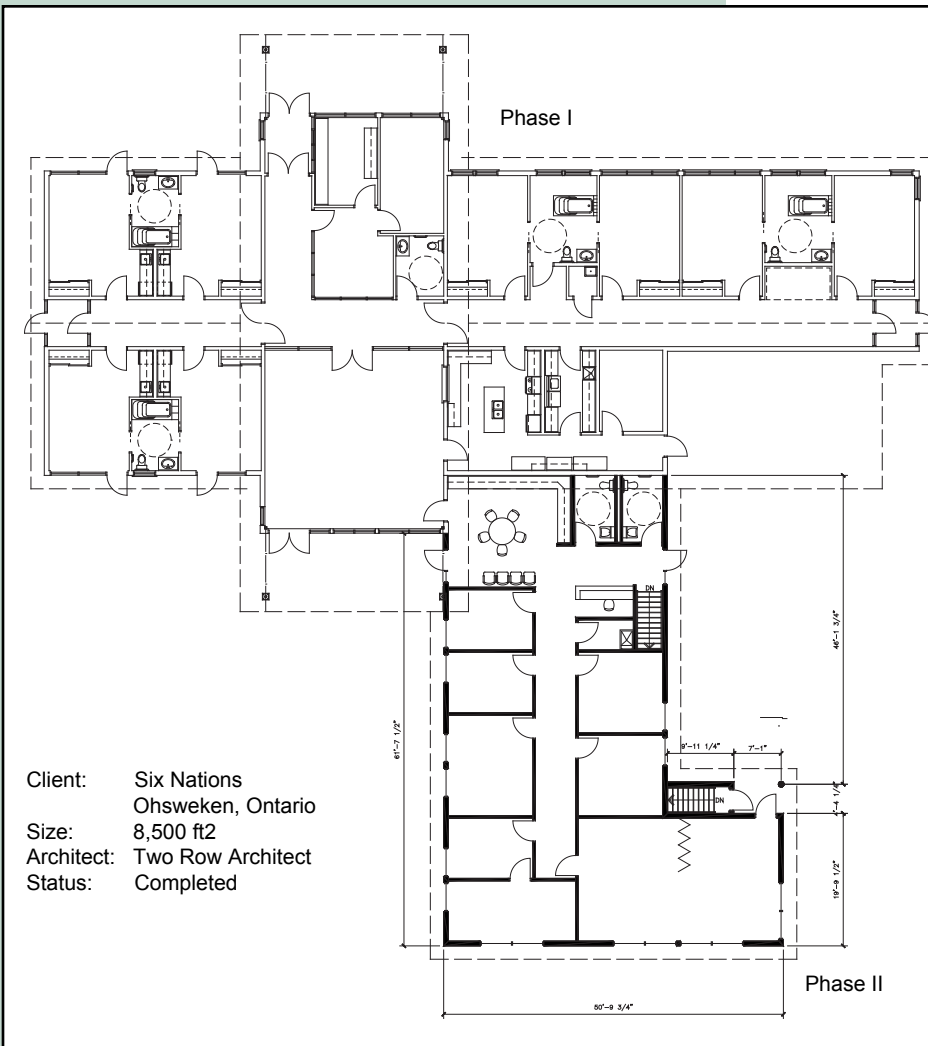


Jay Silverheels Complex - Phase I & II



8 Unit Long Term Care Facility - Supportive Housing

The Jay Silverheels Complex was designed to provide a quality facility that is safe, efficient and conducive to the life-style of the Six Nations' supportive needs members. The complex combines both housing and health services in one location to effectively meet the needs of Six Nations members who suffer from the effects of brain injuries and other physical disabilities. Residents of the complex receive 24 hour medical support, personal care, meal service and access to recreational activities.

Ultimately, the facility design strives for the balance of providing a home-like atmosphere with the convenience of full time staff supervision and their needs as well.

Client: Six Nations
Ohsweken, Ontario
Size: 8,500 ft²
Architect: Two Row Architect
Status: Completed