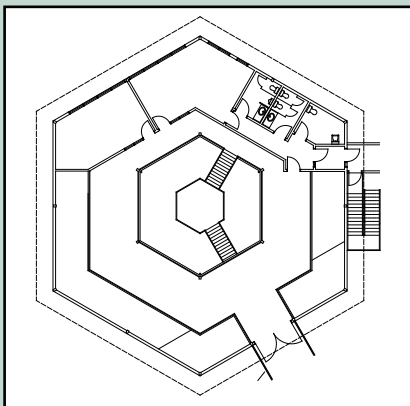
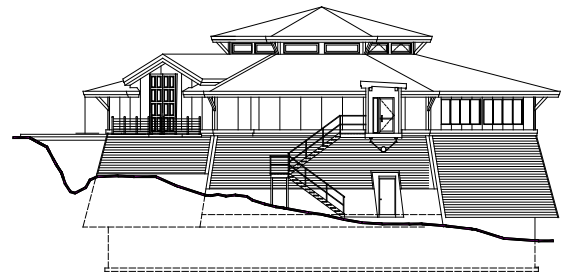


Flat Rock Cellars



Two Row Architect



The winery's tasting room commands a view over undulating vineyards that surround it, and beyond, to Lake Ontario and the distant Toronto skyline. Set into the side of a hill, the winery was cleverly designed as a gravity flow winery. The winery is filled with technical innovations, including a geothermal heating and cooling system. At the heart of this are 4,572 metres/15,000 feet of pipes snaking back and forth at the bottom of the small man-made lake beside the winery. Heat exchangers give the winery the option of cooling wine tanks or heating the winery, as required. The advantage is a green image and inexpensive climate control.

Client: Flat Rock Cellars - Jordan, Ontario
Size: 13,000 ft²
Cost: \$1.1 M CAD construction value
Architect: Two Row Architect
Status: Opened 2004