

Emily C. General Elementary School

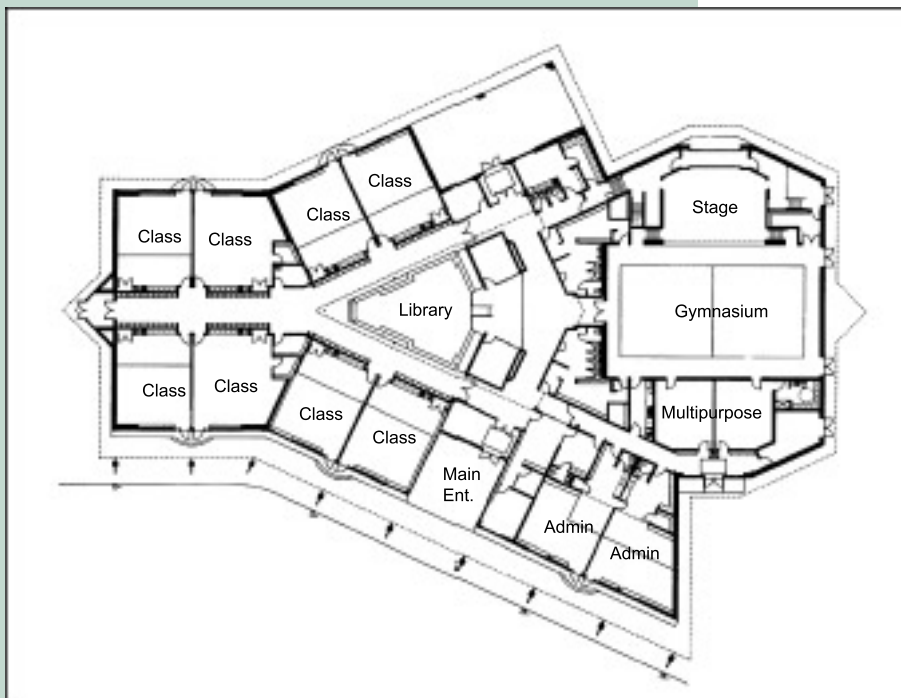


The school's exterior addresses the access road in a very straight-forward manner. The interior, however, splays so that the spine of the building aligns precisely with the north/south meridian. A central skylight provides a constant reference to the rhythm of the day and the cycle of the seasons. The centrally located resource centre forms the heart of the school and is readily accessible to all classrooms.



The structural steel framework has been left exposed and is brightly painted in homage to the industry that has helped the Six Nations Community to prosper.

The layering effect present in the brick veneer is meant to evoke earth "strata" rather than the typical "load-bearing" imagery found in other institutional buildings.



"I find the design to be aesthetically pleasing through the combination of a progressive, modern look and a suggestion of traditional form. The design, though unique, can be constructed using conventional methods and materials resulting in no abnormal construction costs."

- E. Dufferin Davis, Project Mng'r
Six Nations of the Grand River

Client: Six Nations of the Grand River
Size: 24,500 ft² (2,420 m²)
Cost: \$4.1 M construction value
Architect: MMMC Inc. Architects
Brian Porter- Project Arch.
Status: Opened September 1990